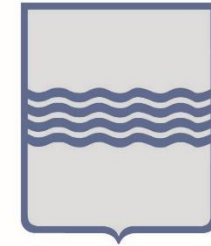


Airport Network EU-China

Preliminary Meeting
20 March 2019



**REGIONE
BASILICATA**



GAL START >2020
MATERA ORIENTALE - METAPONTINO



/// BASILICATA REGION



SOME INSIGHTS

- ✓ **568.841** inhabitants
- ✓ **131** municipalities
- ✓ **56** inhabitants / km²
- ✓ **4.342** (average inhabitants per municipality)

Two provinces

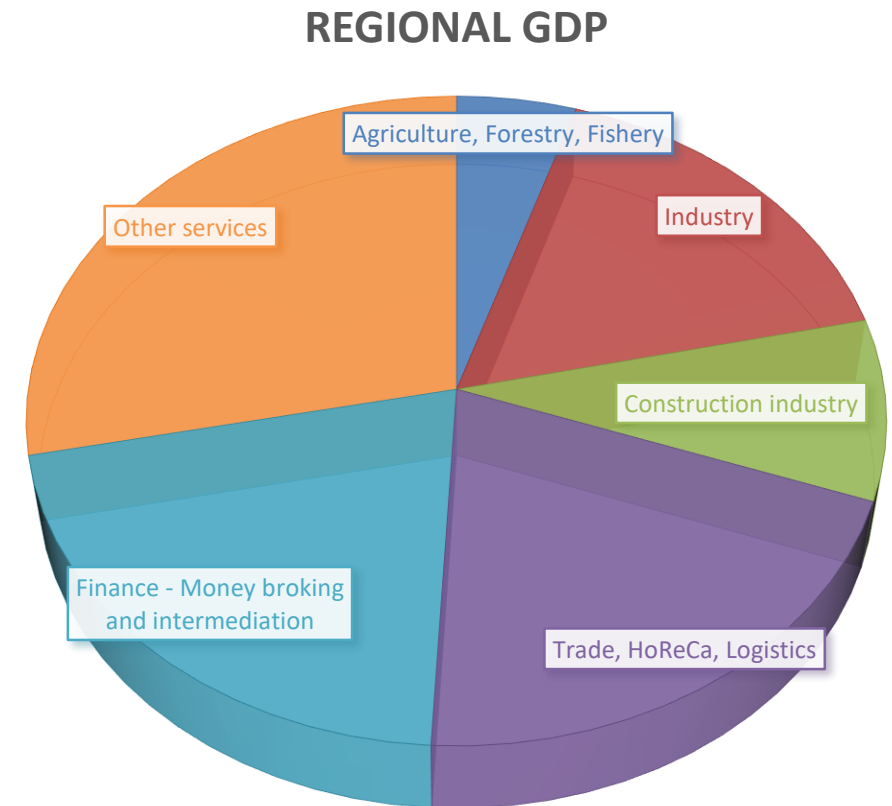
- ✓ **POTENZA** (369.538 inhabitants)
- ✓ **MATERA** (199.303 inhabitants)

/// BASILICATA REGION

ECONOMIC SCENARIO

SECTOR	REGIONAL GDP (EUR million)	%
Other (tourism, PA)	2.681	25,44%
Finance - Money broking and intermediation	1.986	18,85%
Trade, HoReCa, Logistics	1.935	18,37%
Industry	1.572	14,92%
Construction industry	854	8,11%
Agriculture, Forestry, Fishery	468	4,44%

BASILICATA GDP -> 0,7% OF ITALIAN GDP (2016- ISTAT)



BASILICATA REGION

MAIN INDUSTRIES

FCA IN MELFI



OIL EXTRACTION SITE IN VIGGIANO



/// BASILICATA REGION

TOURISM

MAIN DESTINATIONS

ARRIVALS	NUMBER
GERMANY	10.266
FRANCE	15.491
USA	13.926
UK	11.866
SWITZERLAND	6.259
NETHERLANDS	5.839
AUSTRALIA	4.232
BULGARIA	1.654
ROMANIA	2.102
BELGIUM	4.000
CANADA	3.458
SPAIN	3.590
CZECH REPUBLIC	1.121
POLAND	2.003
CHINA	3.931
RUSSIA	1.919
OTHER ASIA	3.272
AUSTRIA	2.039
ARGENTINA	2.188
OTHER WORLD	19.555

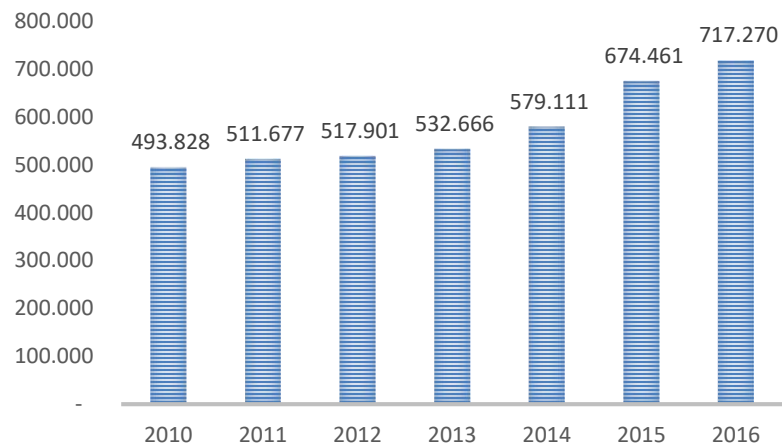


Source: APT Basilicata – March 2018



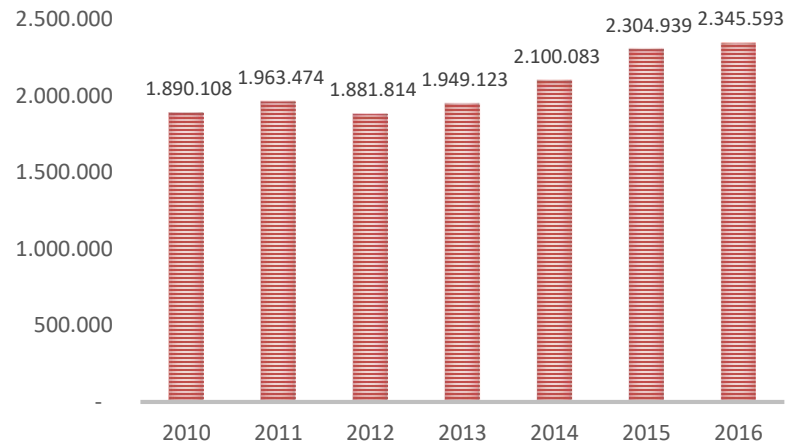
BASILICATA REGION TOURISM

TOURIST NUMBERS



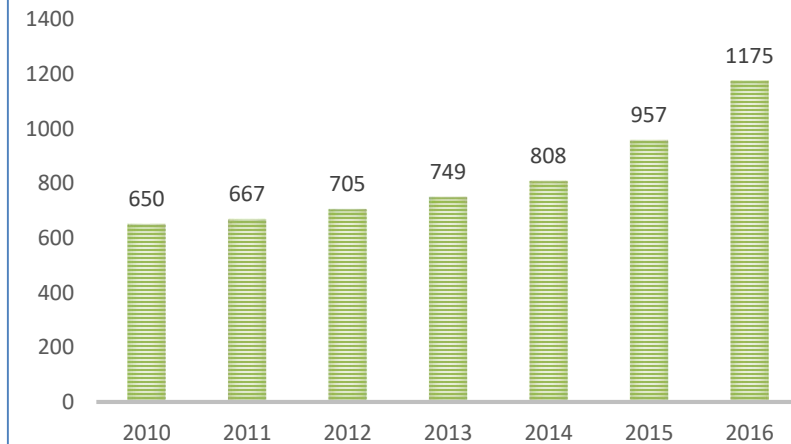
SOUTH ITALY
19.626.416 (Basilicata 3%)

N. OF NIGHTS



SOUTH ITALY
76.308.320 (Basilicata 3%)

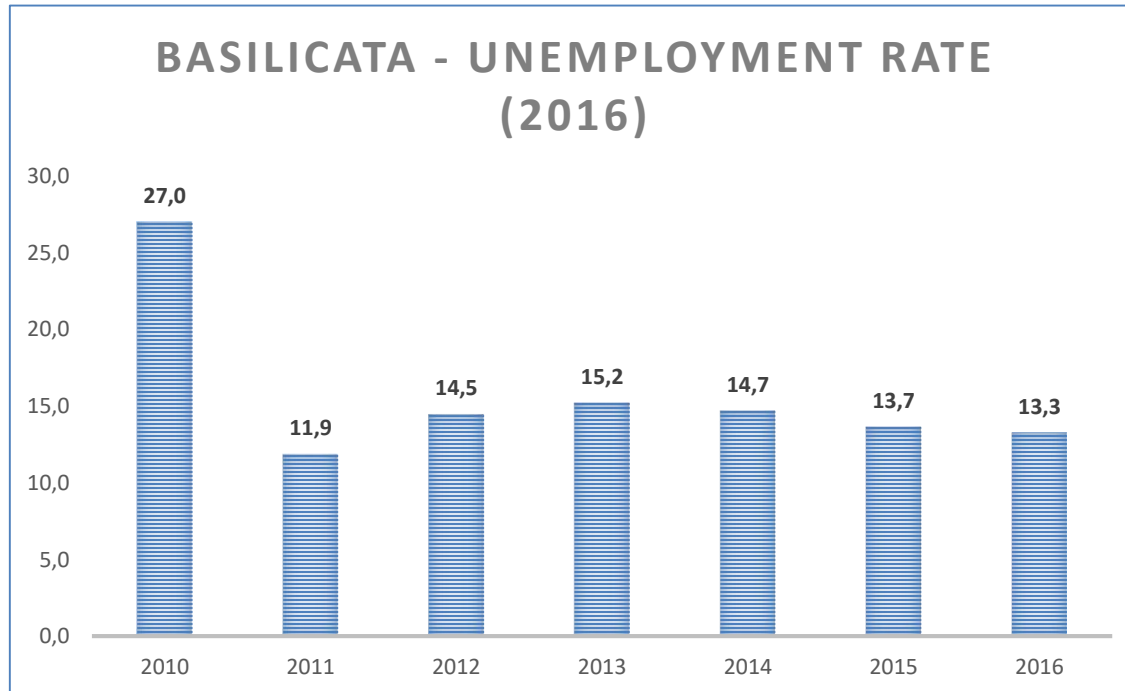
TOURIST ACCOMODATION



SOUTH ITALY
28.223 (Basilicata 4%)



BASILICATA REGION



UNEMPLOYMENT RATE (ISTAT 2016)

ITALIAN SOUTHERN REGIONS -> 19,12%

OVERALL ITALY -> 10,94% (ISTAT 2016)

/// BASILICATA REGION EXPORT (2014)

2,6%

North America

Tot. export: 29.711*

85,9%

Europe

Tot. export: 991.190*

5,4%

Asia

Tot. export: 61.713*

1,1%

South America

Tot. export: 12.268*

4,7%

Africa

Tot. export: 54.685*

0,3%

Australia

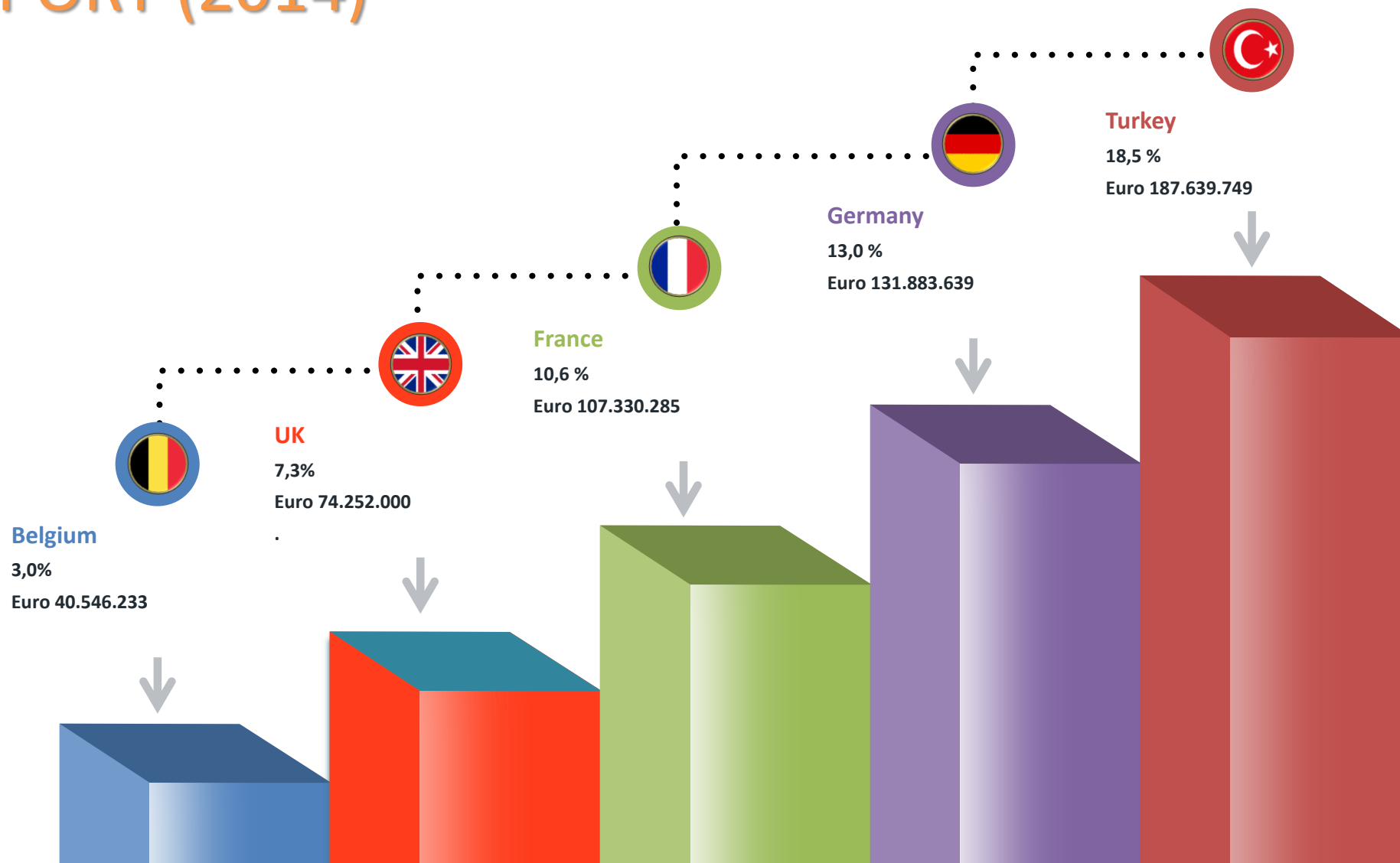
Tot. export: 3.752*

* x 1.000



BASILICATA REGION

EXPORT (2014)



/// BASILICATA REGION

Province of Potenza

SECTOR	2010	2011	2012	2013	2014
Agriculture	1.483	1.638	4.663	1.595	2.862
Oil extraction	54.615	63.246	66.767	143.591	165.577
Industry	1.240.624	1.112.803	1.078.884	762.843	603.568
Other	270	179	688	223	16
GRAND TOTAL	1.297.015	1.177.869	1.151.006	908.266	772.074

Province of Matera

SECTOR	2010	2011	2012	2013	2014
Agriculture	26.273	35.339	33.287	33.834	44.621
Oil extraction	11	4	0	19	0
Industry	197.817	229.248	214.174	210.442	194.461
Other	1.869	225	306	720	493
GRAND TOTAL	225.970	264.815	247.766	245.052	239.581

EXPORT (2014)





PISTICCI AIRPORT

/// PISTICCI AIRPORT



1960: the Enrico Mattei airport was built as a functional infrastructure for the industrial settlement that was being built in the same period.

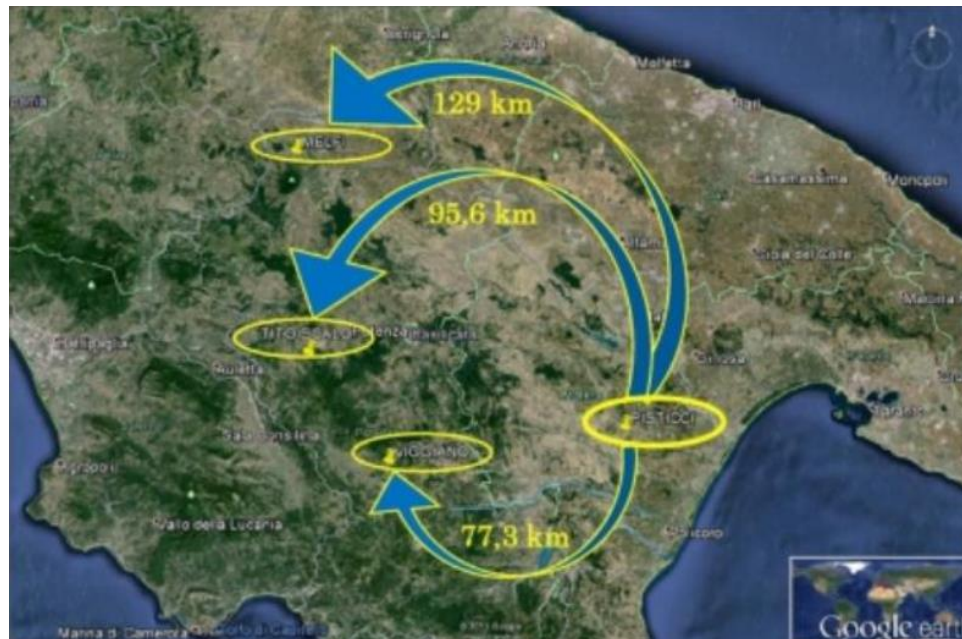
1987: "Consorzio Industriale – Provincia di Matera" signed a specific financing agreement with the Ministry of Finance for the "Development of the Pisticci Airport Infrastructure".

2016: First extra-UE demonstration flight to Medjugorje (WinFly)

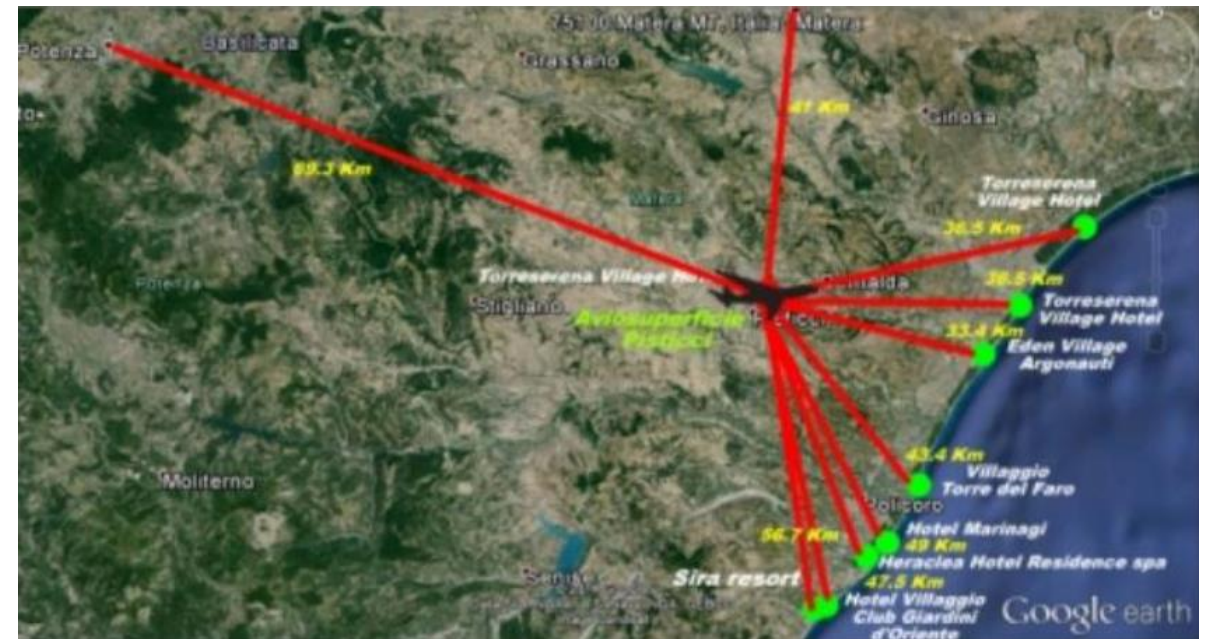


PISTICCI AIRPORT

SOME INFORMATION



Distance from the main regional industrial areas



Distance from the main regional tourist accommodations



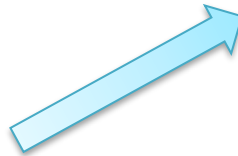
PISTICCI AIRPORT

SOME INFORMATION

RUNWAY LENGHT: 1.400 metres

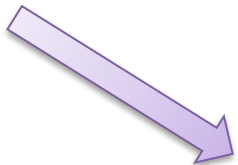
RUNWAY WIDTH: 30 metres

SERVICES



PASSENGERS

- ✓ Retail shopping
- ✓ Retail food
- ✓ Newspaper and tobacco stand



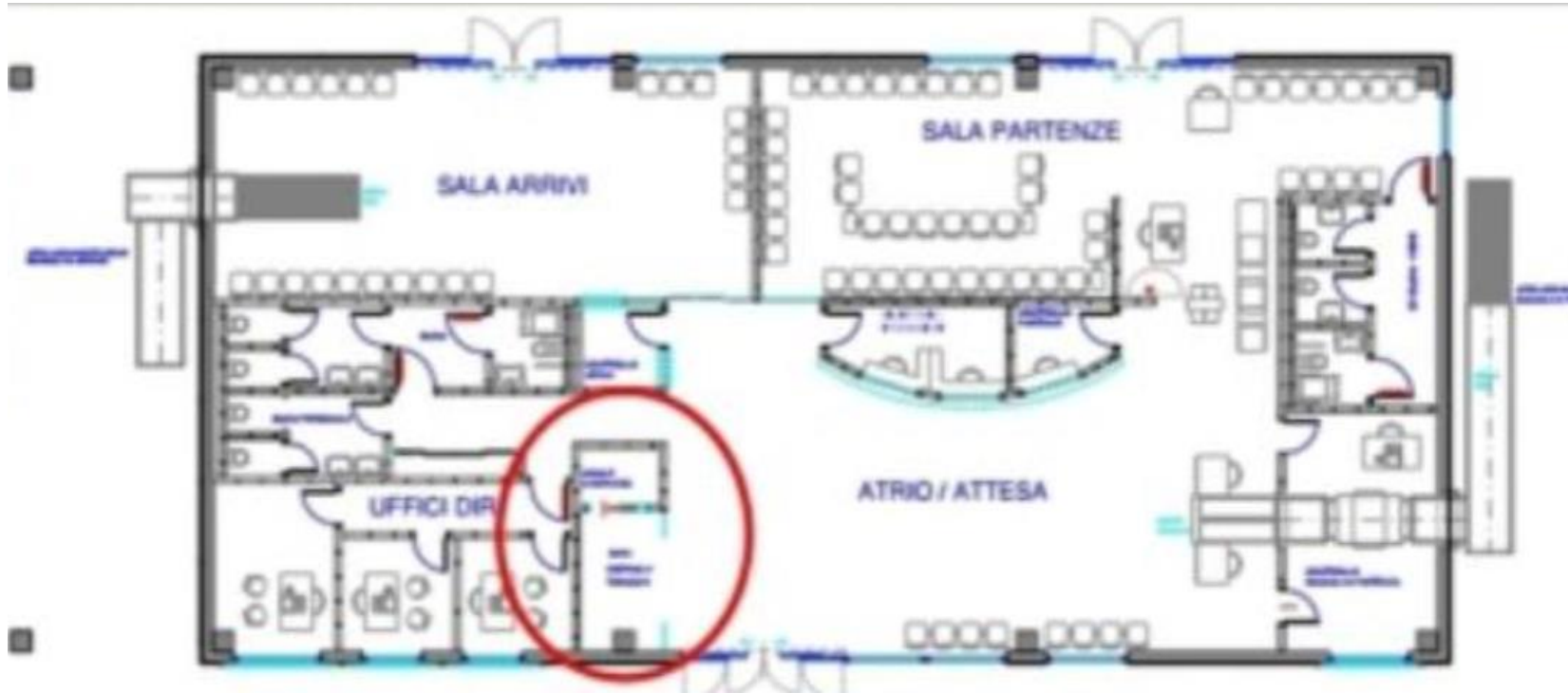
AIRCRAFTS

- ✓ Certified maintenance
- ✓ Warehouse
- ✓ Tools & equipment
- ✓ Fuel area



PISTICCI AIRPORT

SOME INFORMATION



/// PISTICCI AIRPORT

WIN FLY'S PROJECT

- ✓ **Fly on demand** -> aerotaxi max 9 seats
- ✓ **Executive flights** - > aircraft max 19 seats
- ✓ **Scheduled flights**- > to / from Italy
- ✓ **Cargo** - > to / from Italy





PISTICCI AIRPORT

THE SITUATION

The «Consorzio Industriale di Matera», owner of the infrastructure, on the 13 March 2019 approved the new tender project in order to:

- ✓ Identify the new company in charge of the airport infrastructure management for 10 years (possible renewal up to 15 years)
- ✓ The new player shall be qualified to ENAC (Ente Nazionale Aviazione Civile)
- ✓ The new player shall be in charge of the implementation of connected project (aviation school, training for the human resources of the surrounding activities, etc.)

Public tender will be implemented by Basilicata Region.



LEADER COOPERATION

/// LEADER DISTRICTS



BASILICATA REGION



LAG LA CITTADELLA DEL SAPERE

/// LEADER



MUNICIPALITIES: 27
INHABITANTS: 70.000

LEADER BUDGET: EUR 4.800.000

- **35%** Competitiveness of SMEs and agricultural sector
- **55%** Tourism
- **35%** Social and Work inclusion



MUNICIPALITIES: 15
INHABITANTS: 78.000

LEADER BUDGET: EUR 5.653.000

- **38%** Competitiveness of SMEs and agricultural sector
- **62%** Tourism and exploitation of naturalistic and cultural resources

/// REGIONAL LEADER CALL



NEXT DEADLINES

- From 01 to 10 May 2019
- From 01 to 10 Sep 2019

FUNDING

Up to EUR 200.000 per LAG

Funding rate:

- 100% (LAG and PA)
- 70% (other private entities)

/// REGIONAL LEADER CALL LOCAL NEEDS

Networking



- ✓ Supporting the start-up of the airport by providing new connections through the EU China Airport Network

Airport surrounding activities



- ✓ Training for local companies and HRs
- ✓ Coordination of local productive system (Cargo)
- ✓ Design of a new logistic system with other extra-regional infrastructures (eg. Port of Taranto)

Marketing



- ✓ Promoting local destinations (Tourism)

/// REGIONAL LEADER CALL

LOCAL PARTNERS

- ✓ **BASILICATA REGION** (coordination)
- ✓ CONSORZIO INDUSTRIALE PROVINCIA DI MATERA
- ✓ UNIVERSITY OF BASILICATA & OTHER RESEARCH CENTERS
- ✓ FEDERATION OF ENTERPRISES
- ✓ ASSOCIATIONS OF FARMERS
- ✓ SUB-REGIONAL AND SPECIALIZED REGIONAL PA (EMPLOYMENT, SMEs, TOURISM)
- ✓ LOCAL MUNICIPALITIES

/// OTHER OPPORTUNITIES

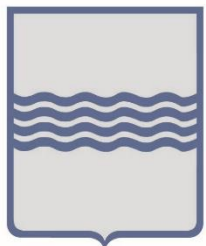
Interreg



FOR REGIONAL AUTHORITIES



FOR REGIONAL AND OTHER
IMPORTANT LOCAL PLAYERS



REGIONE BASILICATA



GAL START > 2020
MATERA ORIENTALE - METAPONTINO

